



22000 Industrial Blvd, Rogers, MN 55374
866-527-7637
www.motoalliance.com

DENALI Plow Mount MA11735 Kawasaki KRX 1000

Thank you for purchasing a DENALI plow mount. You now own a premium, custom plow mount to allow you to use your plow with your UTV/SxS. Please note the following instructions and heed all warnings.

- Your UTV/SxS and plow system can cause death or injury. Please use caution and common sense when operating your unit.
- Read your Plow Operator Manual, your Winch Operator Manual, and all warning labels before operating your UTV/SxS.
- Operate your UTV/SxS at a walking speed with the blade installed. Do not exceed 5 mph (8 km/h) even with the blade up.
- Do not operate the UTV/SxS on slopes greater than 10 degrees with the plow installed.
- Always lower the plow to the down position before leaving your UTV/SxS unattended.

SEVERE INJURY OR DEATH MAY RESULT IF YOU ARE NEGLIGENT.

DENALI Kawasaki KRX 1000
MA11735

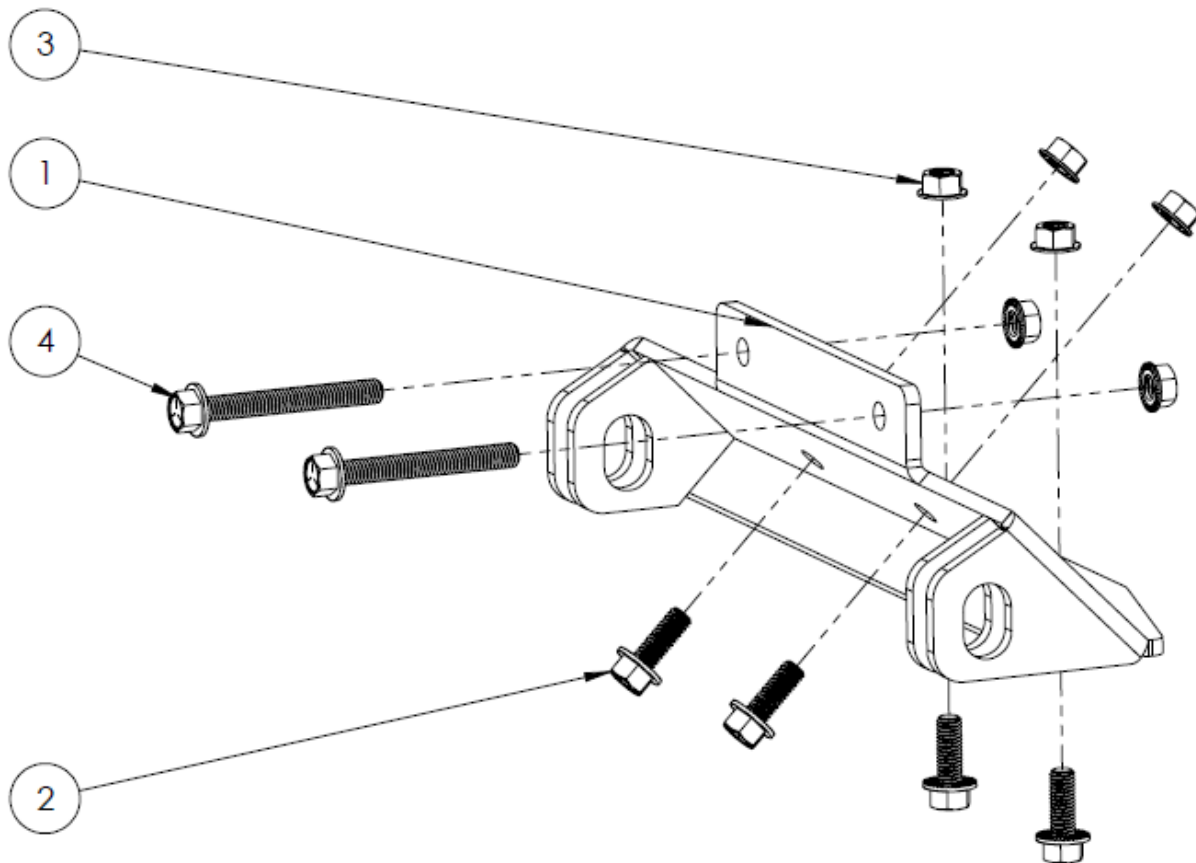


22000 Industrial Blvd
Rogers, MN 55374
866.527.7637

Kit Contents:

Please verify that all hardware and parts are included in your package.

Item Number	Description	Quantity
1	MA11735-W1 Plow Mount	1
2	3/8"-16 x 1" Serrated Flange Bolt	4
3	3/8"-16 Serrated Flange Nut	6
4	3/8"-16 x 3" Serrated Flange Bolt	2



Installation Instructions

1. Lift the plow mount into the location as shown in Figure 1. Remove the tow hook if installed. Secure with the two 3/8"-16 x 3" Serrated Flange Bolts.



Figure 1

2. Verify that there is nothing behind the 4 remaining holes in the mount plate. Using the mount plate as a template, use a 3/8" drill bit to drill through the holes in the mount plate and into the skid plate.

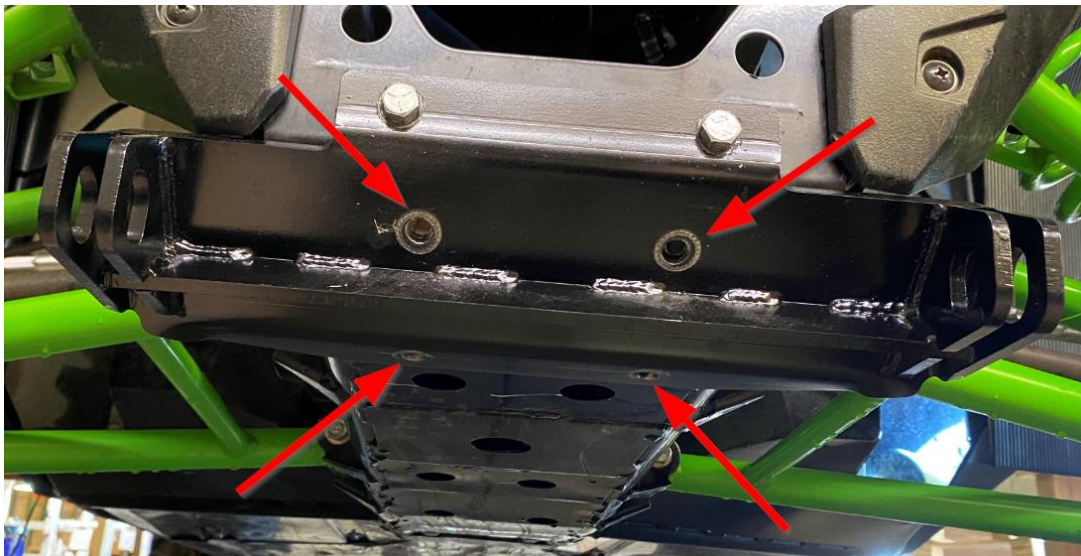


Figure 2

3. Use the 3/8"-16 x 1" Serrated Flange Bolts and Nuts to secure the plow mount to the machine through the holes you just drilled as shown in Figure 3.



Figure 3

4. Verify that all hardware is tightened evenly.
5. Use the pins supplied with your DENALI Plow System to attach the plow to the mount.
6. Retighten all hardware after the first use, continue to retighten hardware seasonally.